

SOHO WORKS

LOFT
WHITE CITY

THE LOFT

Located in Soho Works White City, next to White City House, The Loft is a new space for meeting, events and entertaining.

The Loft is a versatile and relaxed setting for daytime meetings, launches, conferences or away days. It could be transformed into an intimate space for evening drinks, dinners and parties.

There are three rooms that can be hired individually or together as a takeover; The East Room, Drawing Room and the Library. These spaces break out into a communal open plan lounge and kitchen where we serve food and drink. There is also a 38 sqm outdoor terrace with views of West London.

The Loft includes AV and podcasting equipment, as well DJ inputs, plus dedicated back of house kitchens, giving guests the opportunity to use their own chefs or hosts.



SET UP	SEATED	STANDING	THEATRE	TERRACE
CAPACITY	50	80-100	35	50

FOOD AND DRINK

Food is available from a set menu, or we can work together to create a meal especially for your event. There's even the option to use your own chef or caterer, on a dry hire basis.

TECHNICAL INFORMATION

Sockets and USB charging throughout all workspaces

Meeting room screens 55"- 98"

Wireless connectivity and conferencing

WiFi up to 110MB p/sec throughout

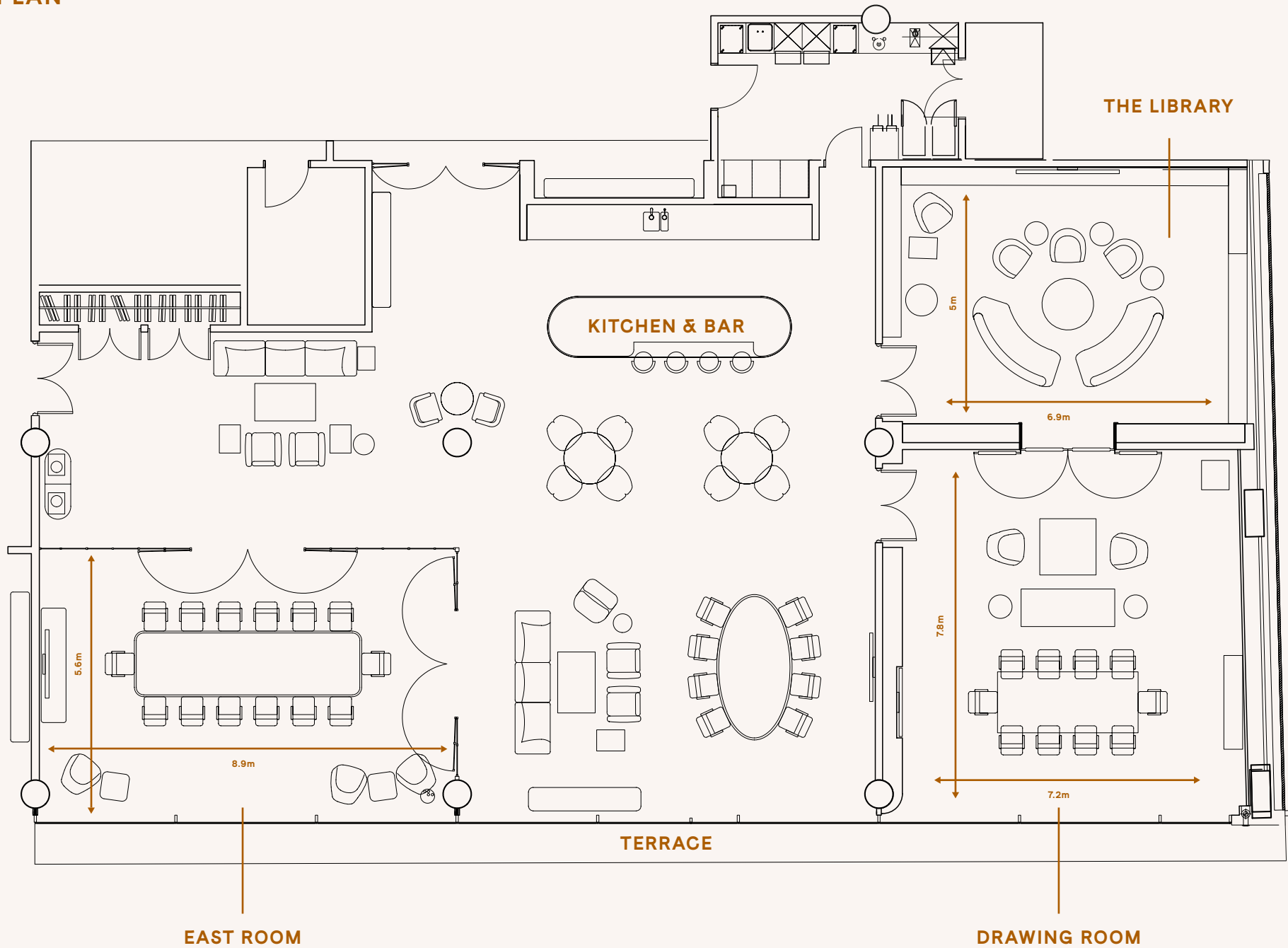
Data boosting available on request

Podcasting equipment

Several DJ and sound system points



FLOORPLAN





LOUNGE & KITCHEN

Hiring individual rooms within the Loft gives you access to the kitchen and lounge – perfect for breaks and brainstorm. For those taking over the whole space, the kitchen and lounge will be private.

Access to the outdoor terrace with views of West London.

Within this space, furniture layout is flexible and can be set up in theatre style for talks and presentations - for up to 35 seated.



SET UP	SEATED	STANDING	THEATRE
CAPACITY	20	50	35



EAST ROOM

The East room holds the largest meeting table in The Loft, seating up to 14. Ideal for meetings, presentations or private dining.

The room is encased with glass and benefits from natural light with a light and airy feel, but curtains can be drawn for privacy.

Includes use of the communal lounge and loft kitchen when hired alone.

SET UP	SEATED	STANDING
CAPACITY	14	30



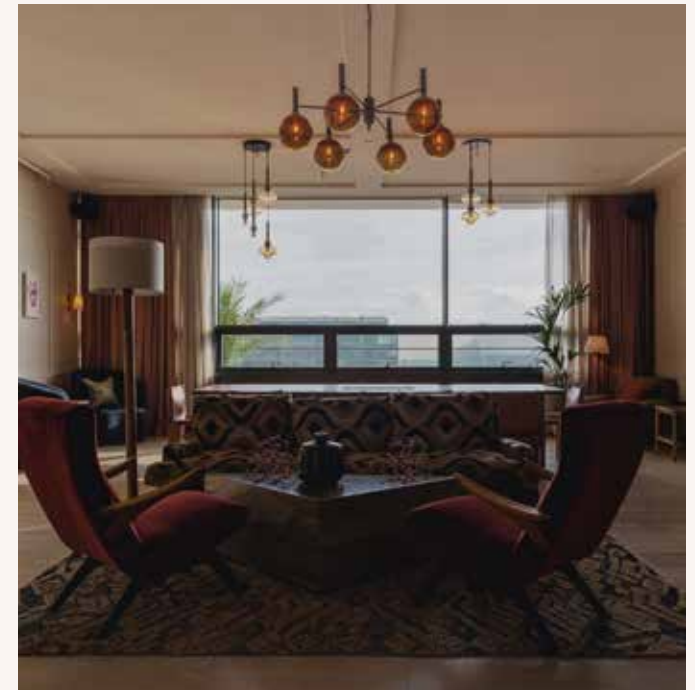
DRAWING ROOM

The Drawing Room is the largest private meeting room in the Loft, a versatile space split with formal and informal seating areas.

By day, the room features relaxed seating for meetings and presentations. The monitor can be covered to transform the room for evening receptions.

The Drawing Room connects with the Library, ideal for screenings and Q&A's.

Includes use of the communal lounge and kitchen when hired alone.



SET UP	SEATED	STANDING
CAPACITY	10	40



LIBRARY

Features relaxed seating, lounge chairs and a sofa. The 98" screen can be hidden for drinks or reception events.

The Library connects to the adjacent Drawing Room, ideal for screenings, briefings and Q&As.

Includes use of the communal lounge and loft kitchen when hired alone.

SET UP	SEATED	STANDING
CAPACITY	8-10	25

SOHO WORKS

FOR MORE INFORMATION PLEASE CONTACT **SARAH-PAIGE BANNER**

SARAH-PAIGE.BANNER@SOHOHOUSE.COM

T: +44 (0)20 7851 1169 | 2 TELEVISION CENTRE, TVC BUILDING, W12 7RJ